



Hepworth Court, 30 Gatliff Road  
London SW1W

GARTONJONES.COM



Hepworth Court, 30 Gatliff Road  
London, SW1W

GARTON JONES.COM

8 Gatliff Road  
Chelsea  
London  
SW1W 8DP

Lettings:  
+44 (0) 20 7730 5007  
gws@gartonjones.com  
www.gartonjones.com

£475 Per Week

A bright and very spacious studio apartment for rent of approx. 410 sq.ft (38 sq.m) in Hepworth Court, part of the popular Grosvenor Waterside development in Chelsea. This FURNISHED apartment benefits from an open plan reception room with a modern integrated kitchen, wood flooring and floor to ceiling windows leading to a PRIVATE BALCONY. 24 HOUR CONCIERGE, GYM & SPA. On-site Sainsbury's Local, coffee shop and private kids club. SLOANE SQUARE & VICTORIA station with Gatwick Express are within walking distance.

- 410 Sq.ft (38 Sq.m)
- Studio Apartment
- Open Plan Living
- Modern Bathroom
- Kitchen With Miele Integrated Appliances
- Balcony
- 24 Hour Concierge
- Parking Available By Separate Negotiation
- On-Site Sainsbury's, Coffee Shop & Bakery, Purple Dragon Private Kids Club & Crèche
- Walking Distance To Sloane Square & Victoria Station



Available via Garton Jones' on-site office at Grosvenor Waterside (underneath Bramah House).

Please note furniture may differ to that shown in the current photos.

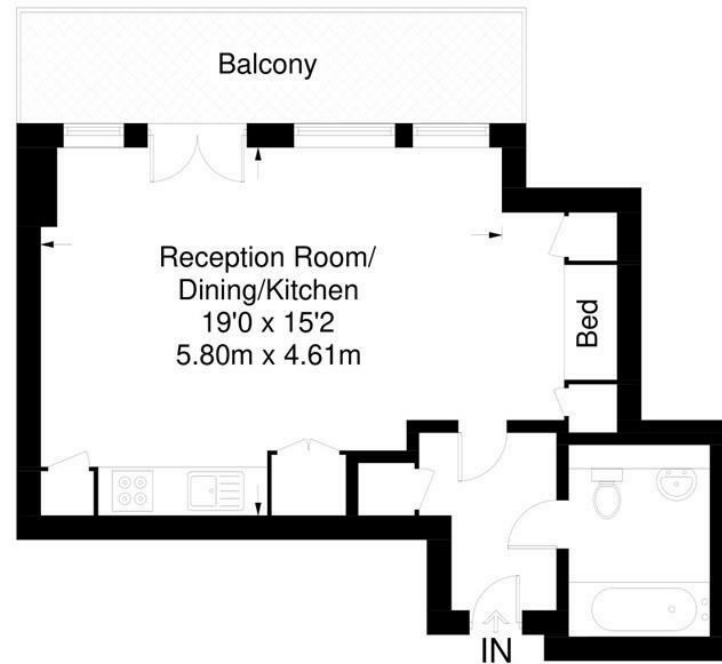
Parking is not included but available under separate negotiation.

Westminster City Council (band E). Total: £1,056.16 per annum 2022/2023.



## Hepworth Court

Approximate Gross Internal Area = 410 sq ft / 38 sq m



Not to scale, for guidance only and must not be relied upon as a statement of fact.  
All measurements and areas are approximate only and have been prepared in accordance with the current edition of the RICS Code of Measuring Practice.



